



Box Properties

--Description--

Name:

Type: Vented Box

Shape: Prism, square

--Box Parameters--

Vb = 4 cu.ft

V(total) = 4.532 cu.ft

Fb = 40.74 Hz

F3 = 33.85 Hz

Fill = none

--Vents--

No. of Vents = 1

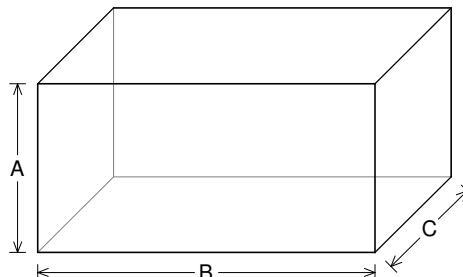
Vent shape = rectangle

Vent ends = one flush

Hv = 12 in

Wv = 2 in

Lv = 7 in



--External Dimensions--

A = 18 in

B = 36 in

C = 15.26 in

--Internal Dimensions--

A = 16.5 in

B = 34.5 in

C = 13.76 in

--Wall Thickness--

Front = 0.75 in

Side = 0.75 in

Driver Properties

--Description--

Name: SEX 15 D4

Type: Standard one-way driver

Company: RE Audio (2015)

--Configuration--

No. of Drivers = 2

Mounting = Standard

Wiring = Parallel

Drivers sum coherently = Yes

Dual voice coils = parallel

--Driver Parameters--

Fs = 31.53 Hz

Qms = 6.094

Vas = 2.527 cu.ft [5.053]

Xmax = 1.1 in

Sd = 127 sq.in [254]

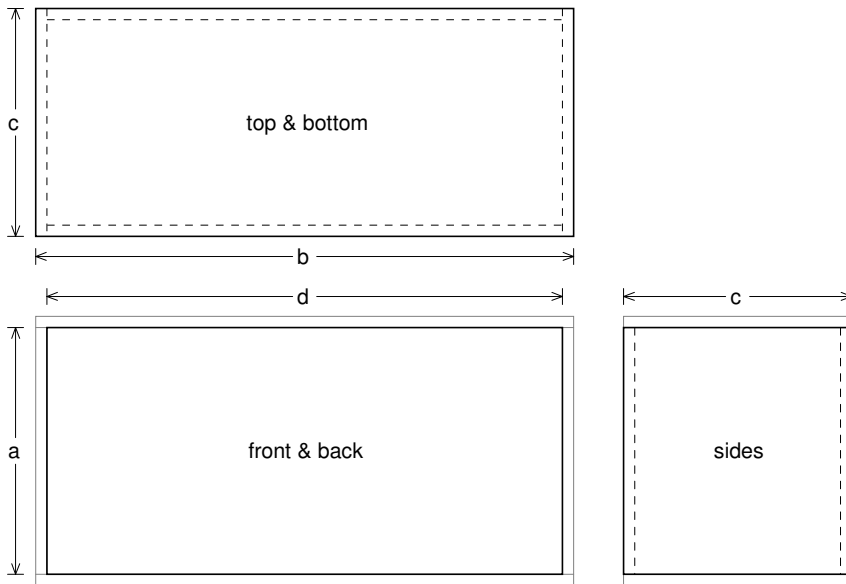
Qes = 0.839

Re = 1.384 ohms [0.692]

Le = 1.273 mH [0.636]

Z = 1.66 ohms [0.83]

Pe = 750 watts [1500]



Box Parts

Box Shape: Square Prism

1 Top, 1 Bottom: depth (c) = 15.26 in
width (b) = 36, thickness = 0.75 in

1 Front, 1 Back: height (a) = 16.5 in
width (d) = 34.5, thickness = 0.75 in

2 Sides: height (a) = 16.5 in
depth (c) = 15.26, thickness = 0.75 in

--Driver Mounting--

Mounting: Front

Aim: All drivers face same direction

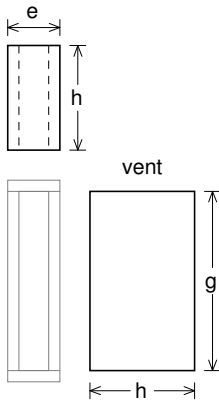
--Vent Parts--

1 Top, 1 Bottom:

width (e) = 3.5, length (h) = 7 in
thickness = 0.75 in

2 Sides:

height (g) = 12, length (h) = 7 in
thickness = 0.75 in





Wiring Diagram

